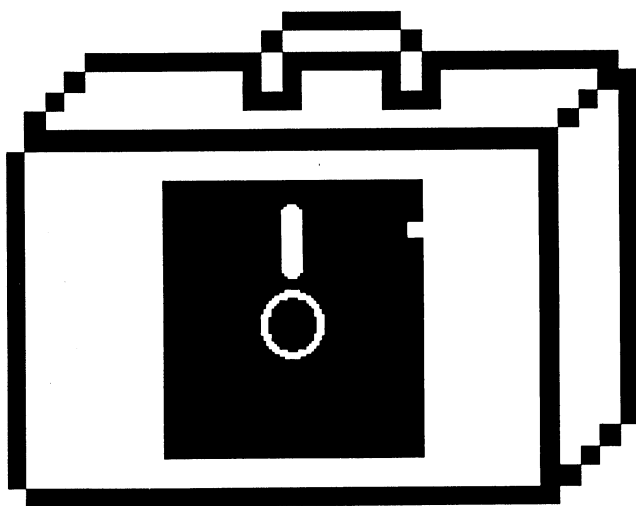


DOSReaDA

for the Apple™ Macintosh™



No part of this publication may be reproduced by any means without the prior consent of the copyright holder. The only exceptions are as provided for in the Copyright (photocopying) Act, or for the purpose of review, or in order for the software herein to be entered into a computer for the sole use of the owner of this publication.

C Port Limited will not in any event be liable for any loss, including consequential loss, caused by any error, defect or failure of the software, including but not limited to loss of use, loss of stored data, loss of profit, or loss of contracts.

This manual was written, designed and laser-typeset using files transferred using DOSReaDA into an Apple Macintosh SE by C Port Limited, London.

Set in Times 10, Times 12, Helvetica 10 and Helvetica 20.

Copyright © 1990 by C Port Limited

FIRST EDITION

All rights reserved.

Apple, Macintosh and Lisa are registered trademarks of Apple Computer Inc; Helvetica and Times are registered trademarks of Allied Corporation; Atari, ST and TOS are trademarks or registered trademarks of Atari Corporation; IBM is a trademark of International Business Machines Corporation; MS-DOS is a registered trademark of Microsoft Corporation; Suitcase II is a trademark of Software Supply Inc; Master-Juggler is a trademark of Alsoft Inc.

C Port Limited has a policy of continuous product development and improvement and reserves the right to change the specification of any part of this product at any time and without notice.

Our thanks to Mark at MacLine for the snappy product name.

Contents

Installing DOSReaDA	1
Using DOSReaDA	2
At-a-glance guide to DOSReaDA	3
Explanation of error alerts	5
Appendix A: Disk formats read by DOSReaDA	7

Installing DOSReaDA



Font/DA Mover

Before you can use DOSReaDA you must first install it. If you have either Suitcase II or MasterJuggler, you can do this simply by dragging the DOSReaDA file from the DOSReaDA disk into the System Folder on your machine. You can then add DOSReaDA to the list of desk accessories known by these utilities.

If you do not have Suitcase II or MasterJuggler, you will have to use Apple's Font/DA Mover to add DOSReaDA to your System.

1. **Find Font/DA Mover and then either select it and choose Open from the File menu, or just double-click on the Font/DA Mover icon.**

The Font/DA Mover dialog should appear, with the Font button selected at the top, and the names of the fonts that are in the System on the current startup disk displayed in the list to the left.

2. **Click the Desk Accessory button at the top.**

The names of the desk accessories in the System will be displayed in the list to the left.

3. **Click the Open button under the empty list on the right.**

A dialog box will appear allowing you to select a new Desk Accessory.

4. **Insert the DOSReaDA disk into a diskette drive.**

After a moment DOSReaDA will be displayed in the list in the dialog box.

5. **Click Open.**

DOSReaDA will be opened, and it will be shown in the list to the right.

6. **Select DOSReaDA and then click Copy.**

DOSReaDA will be copied into your System.

7. **Click Quit.**

There is a limit of about 15 desk accessories per system. If you try to add more than this, Font/DA Mover displays an alert to this effect and you will need to remove an existing desk accessory before you can install DOSReaDA.

Using DOSReaDA

DOSReaDA allows files from diskettes written by MS-DOS on an IBM PC, or TOS on an Atari ST, to be copied into a Macintosh equipped with an Apple FDHD "SuperDrive" without having to use Apple File Exchange or leave whichever program you are currently using. Files can be copied to the Macintosh desktop; or to the clipboard, ready for pasting.

To copy files, choose DOSReaDA from the Apple menu, and ensure that its window is topmost. Its window is topmost when the title bar is highlighted.

Insert the DOS or TOS diskette. DOSReaDA will examine it, and display the names of the files that it finds. Ordinary files are indicated by a small 'document' icon, directories by a small 'folder', and programs by a small 'application' icon.

To open a directory, either select the directory name and click Open, or double-click on the directory name. The pull-down menu at the top of the window can be used to navigate up a list of directory names.

To copy a file to the clipboard click Copy to Clipboard, then either select the file name and click Open, or double-click on the name of the file. The file will be copied to the clipboard. Only one file can be on the clipboard at once.

To copy a file to the desktop click Copy to Desktop, then either select the file name and click Open, or double-click on the name of the file. A Save As... style dialog will be displayed to allow you to choose the name and location to be given to the copied file. Click Save to copy the file.

Text files should almost always be copied with 'Text File' checked in order to be useable on the Macintosh. This is particularly important when copying files to the clipboard for pasting into a word processor or desktop publishing program. Line-feed characters are removed when this is checked, and copying stops at the first control-Z (^Z), otherwise files are copied verbatim.

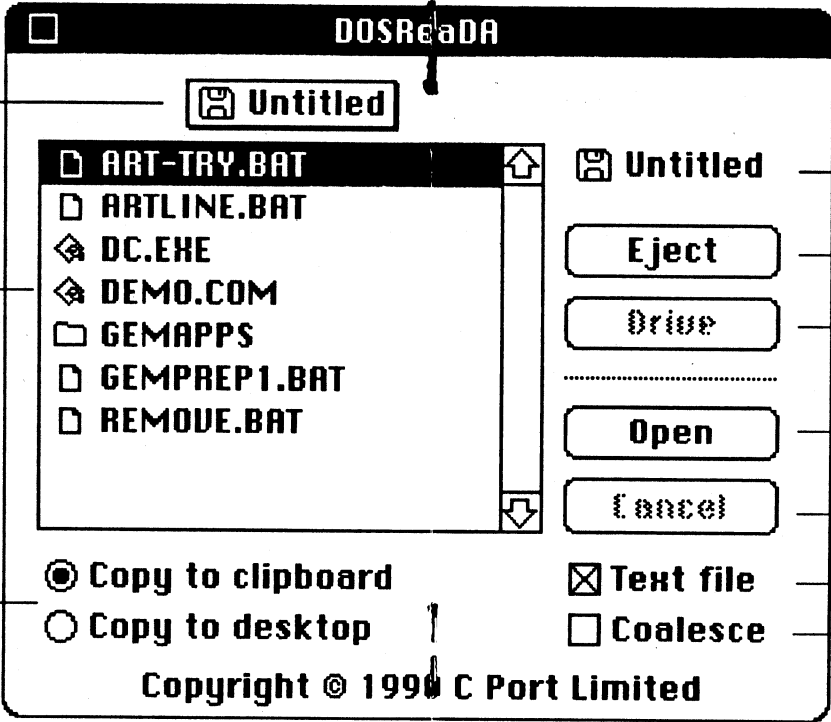
Text files can also be copied with 'Coalesce' checked. This causes adjacent lines of text in the original file to be joined together on the clipboard, or in the file on the Macintosh. A new output line is started when a blank line is found in the original file. Spaces between lines are discarded. This is useful when taking plain-text documents to the Macintosh for word processing or page makeup, by allowing any text formatting to be done by the Macintosh software.

At-a-glance guide to DOSReaDA

Pull-down menu giving path to current directory.

The files, folders and applications in the current directory. Either select a name and click Open to copy it, or double-click the file name to select and copy.

Choose the destination for your files.



The volume name (if any) is shown here. DOS diskettes have a 'diskette' symbol, Atari ST diskettes have a small 'Atari' symbol.

Ejects the current disk from the drive.

Switches between drives when you have more than one FDHD SuperDrive.

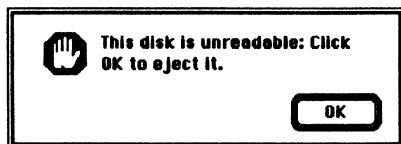
Opens directories, and copies files to either the clipboard or the desktop.

Abandons a copy.

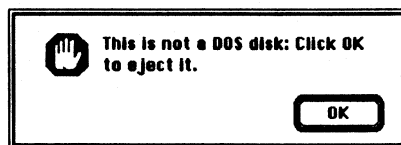
Check this when copying a text file.

Check this to have adjacent lines in a text file coalesced together.

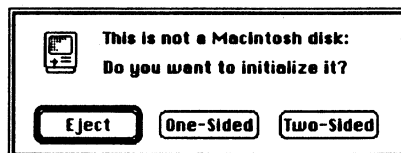
Explanation of error alerts



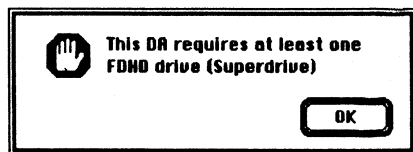
This message will be displayed when a disk has been inserted which cannot be read. There may be a problem with the disk itself, but is more likely that the disk has been formatted in one of the ways that cannot be read by the Apple FDHD drive. Click OK to eject the disk.



This message is displayed when the disk can be read, but it is not in either DOS or TOS format. DOSReaDA reads all DOS diskette formats, but there are some TOS formats that it cannot read (see Appendix A). Click OK to eject the disk.

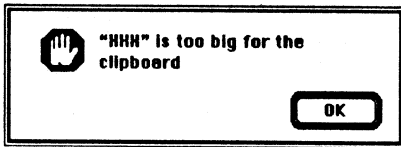


This message is displayed when a disk is inserted and the DOSReaDA window is not the topmost window (it is the topmost window then its title bar is highlighted). It may also occasionally appear if the Finder notices that a disk has been inserted before DOSReaDA does. In both cases, click Eject to eject the disk, ensure that the DOSReaDA window is topmost, then insert the disk again.

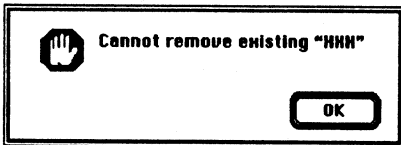


This message is displayed when DOSReaDA is being used on a machine without an FDHD drive. Machines without FDHD drives include the Macintosh 128k, 512k, 512k Enhanced, the Macintosh XL (Lisa) and the Macintosh Plus.

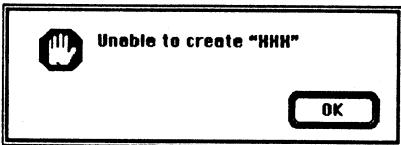
Early Macintosh SE's, and early Macintosh II's were also not fitted with FDHD drives and DOSReaDA cannot be used on these machines unless they are upgraded.



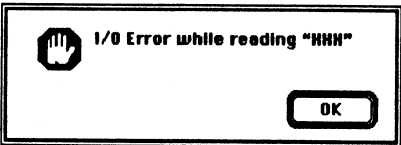
This message is displayed when there is not enough unused memory to store the entire file on the clipboard. You may be able to gain more space for the clipboard by closing any open desk accessories, or quitting from some open applications.



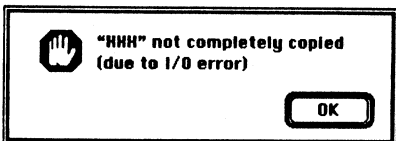
This message is displayed when trying to copy a file to the desktop with a name which is the same as that of an existing file which cannot be replaced. The existing file may be locked, or it may be in use by another application or DA. If the file is on a file server, check that you have permission to delete the file.



This message is displayed when trying to copy a file to the desktop, and the disk you are trying to save onto is either full or locked. You may also have a problem if trying to save onto a file server if you do not have suitable permission.



This message is displayed when DOSReaDA has a problem reading the disk. It may be that there is a slight difference in the alignment of the diskette drive which wrote the disk, and that of the Macintosh's FDHD drive. It can also happen if the filesystem on the disk is damaged in some way. You can check this under MS-DOS using `chkdsk`.



This message is normally displayed as a result of the problems described with the error message above. Some, but not all, of the file will be copied to the clipboard or desktop.

Appendix A

Disk formats read by DOSReaDA

DOSReaDA is limited in the format of diskettes that it can read by the Apple FDHD "SuperDrive". This drive can read Macintosh 400k, 800k and 1.4Mb diskettes, ProDos diskettes from the Apple II and IIGS, and some IBM and Atari formats. It is this latter capability that DOSReaDA uses. The FDHD drive can read diskettes in any of the following formats:

- IBM 720k 80 track 9-sector 3.5" diskette
- IBM 1.4Mb 3.5" diskette
- Atari ST 720k 3.5" diskette

The FDHD drive cannot read the following:

- IBM 720k 80 track 8-sector 3.5" diskette
- IBM 360k 3.5" diskette
- Atari ST 360k 3.5" diskette

There is currently no support in DOSReaDA for the Apple PC 5.25" diskette drive.

C Port Limited, 4 Hurst Lodge, Stanley Avenue, Wembley, Middlesex HA0 4JG